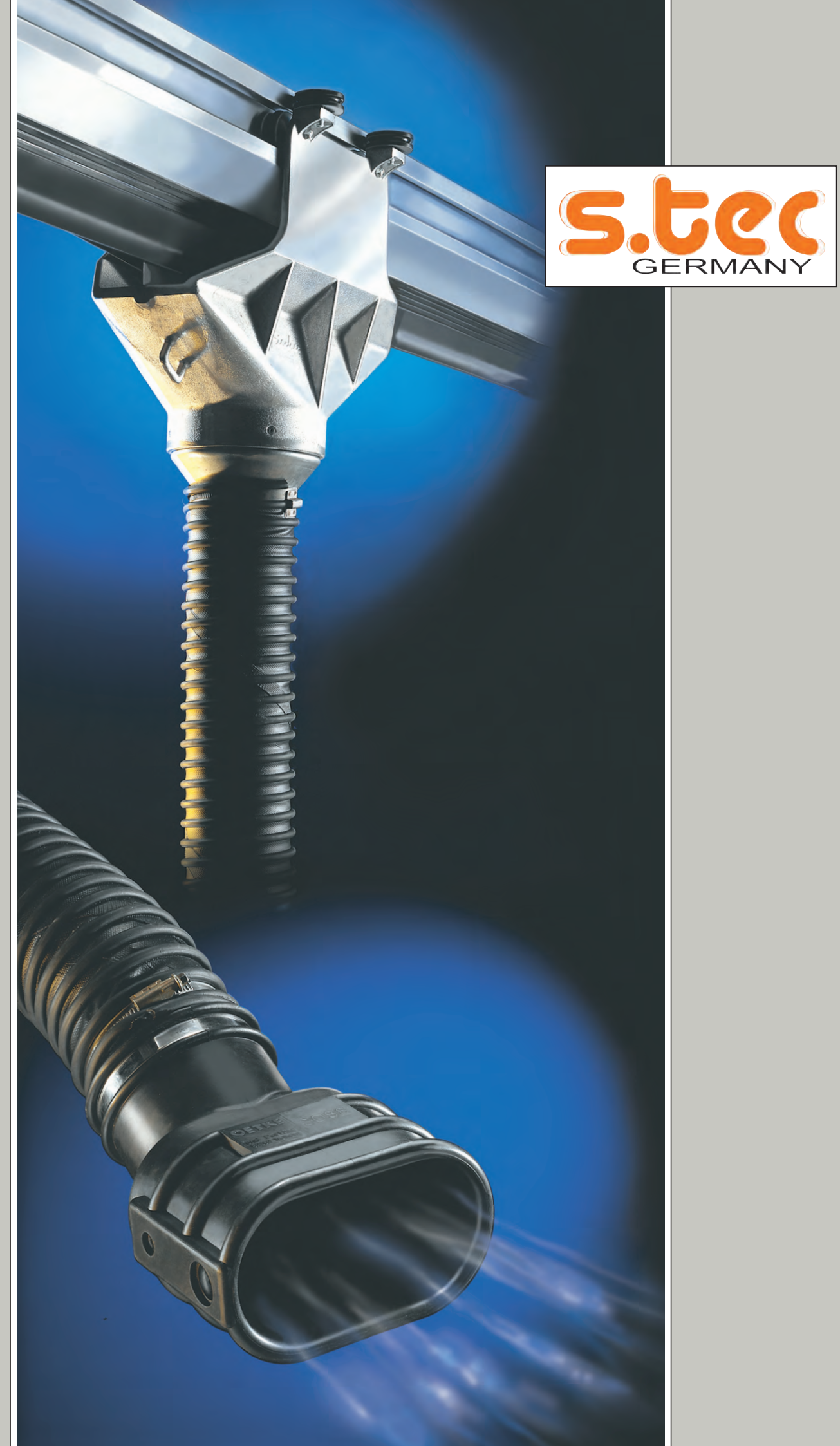




Rail system SSK 290 as movable coordinate system for passenger car performance test beds with suction performance of up to 4,000 m<sup>3</sup>/h and available as high temperature version for exhaust gas temperatures of up to 900°C.



Exhaust extraction system for Dyno tests, designed for an engine power of maximum 1,000 kW. 2x Extraction rail system from type SSK 450 each equipped with exhaust extraction hose with temperature resistance till 850°C and special "down-slide" stainless steel funnel.



Exhaust extraction system specially designed for vehicle inspection stations with (TÜV, CT, CRV, NCT, ITV, APK, MOT, SWEDAC, etc...) equipped with 2x extraction rail system from type SSK 290 and return transfer station.



Export Department:  
s.tec Germany GmbH  
Im Löhken 3  
58099 Hagen  
Tel.: +49 (0) 23 31 - 3 62 79-0  
Fax: +49 (0) 23 31 - 3 62 79-36  
info@s-tec-germany.de  
www.s-tec-germany.de

Export Department:  
Holzhofring 2  
82362 Weilheim i. Obb.  
Tel.: +49 (0) 8 81 - 92 58 58 18  
Fax: +49 (0) 8 81 - 4 16 44



**We are member!**  
Federal Association of  
Manufacturers and Importers  
of automotive service  
equipment r.a.



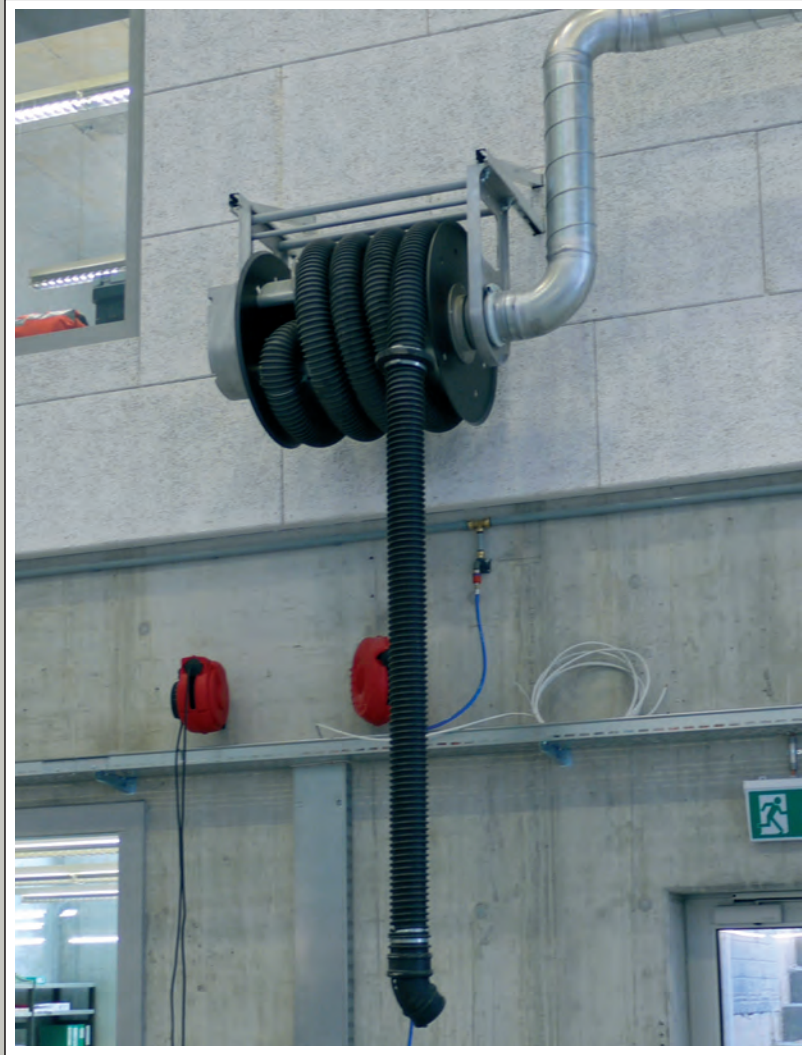
The **s.tec germany GmbH** is a leading manufacturer in the area of gas, smoke and dust spot extraction.

We can offer individual components as well as complete solutions from planning to installation to our customers.

International orientation combined with the manufacturing location Germany – Made in Germany – is a very important part of our company philosophy as well.

The **s.tec germany** team professionally and efficiently implements a complete spectrum of tasks, ranging from lawn mowers to diesel locomotives.

National and international references with all renowned automotive manufacturers and companies in the industry ensure the user that he is using a product of lasting value.



Exhaust extraction hose reel with clockwork, wall bracket, and duct set for industrial halls. Solution has a working range of 7.5m, suitable for cars and transporter vans.



Car workshop with rail system, 2x extraction trolleys equipped with hose 5m and funnel. The exhaust extraction fan is mounted directly on the rail.



Exhaust extraction system in a Mercedes Benz truck workshop with 8x working bays in 4 rows. The workshop is partially covered by a movable crane. Exhaust extraction solution with electrical movable hose reels in a rail system from type SSK 450.



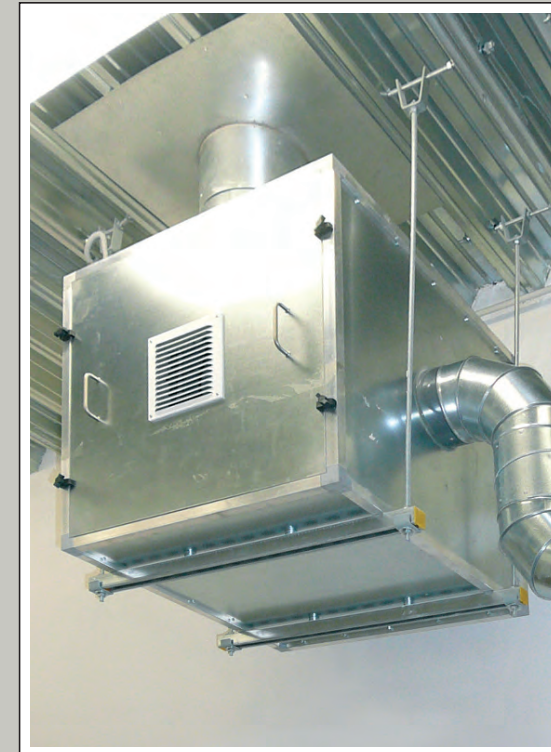
Exhaust extraction system in Mercedes Benz workshop with 240x working bays. Extraction rails equipped with the universal and exhaust pipe independent capturing element SLS.



The Universal and exhaust pipe independent capturing element SLS is suitable for any vehicle: small passenger cars, luxury cars, sport models or even racing cars.



Kit suitable for underground exhaust extraction systems, serving 2x single exhaust pipes. Picture was taken in a BMW workshop with 10 working bays.



Exhaust extraction fan integrated in a low noise sound enclosure mounted under the roof. Fan set installed for a centralized underground extraction system. Picture was taken in a Toyota workshop with 12x working bays.



Underfloor extraction system with pull-out exhaust gas hose, rotatable bended nozzle 60° and gripper nozzle with clamping pliers for dual-pipe exhaust systems incl. power supply, pneumatic operation. The system is delivered as a complete fitted component with high temperature tubing for stub lines and connected to a central fan type FD.



Exhaust extraction system for emission tests in a Porsche workshop. Extraction fan equipped with hose ø150 mm, and a special standing funnel. A second separate connection is available for a possible second exhaust pipe.